










Bivio di Ravi sud

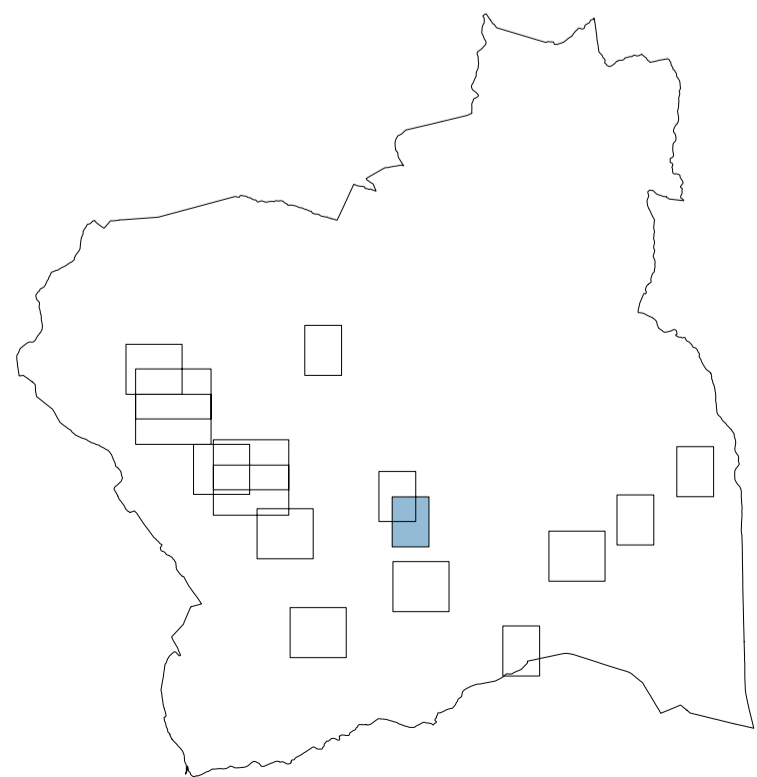
LEGENDA

-  Perimetro Utoe / Centro insediativo
-  Fascia di rispetto degli insediamenti
-  Perimetro dei centri abitati (art. 55, c. 2, let. b), Lr 1/2005)

Subsistemi di piano strutturale

-  Tessuti storici
-  Tessuti consolidati
-  Aree idonee al completamento urbano
-  Edifici storici, presenti nella cartografia del 1943

-  Aree critiche



adozione C.C.

approvazione C.C.

